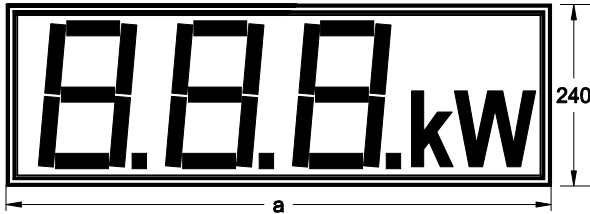


Type: DA200-NZxx/AxxE totalizer

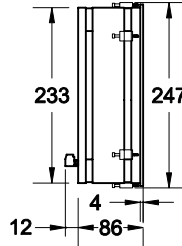


front view:

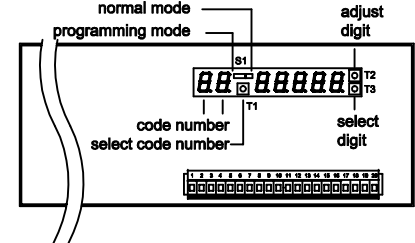
DA200-NZ30/AxxED



side view



rear view



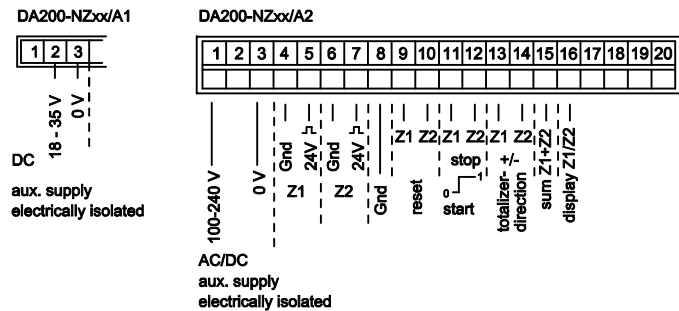
case dimensions

DA200	aluminium case powder seam		bezel width [a]	cutout panel b x h
	case depth(with terms) 86 (98) mm			
DA200-NZ __ /xxxE	DA200-NZ __ /xxxE <u>D</u>	DA200-NZ __ /xxxE <u>D1</u>		b x h
30			576	570 x 234
40	30	°C	720	714 x 234
50	40	°C	912	906 x 234
		40	1056	1050 x 234
		50	1248	1242 x 234

programming

code number	display	description
00	00000	
00	0.0000	decimal point position 0 = without 2 = 0,00 1 = 0,0 3 = 0,000
	0.0	impulse-flank 0 = neg. flank ≤ 1 kHz 1 = pos. flank ≤ 1 kHz 2 = neg. flank ≤ 10 Hz relay control 3 = pos. flank ≤ 10 Hz relay control
01	0.0000	preset Z1
02	0.0000	preset Z2
03	0.0000	reset-preset Z1
04	0.0000	reset-preset Z2
05	0.0000	impulse divider Z1 (number of impulse /1 display step)
06	0.0000	impulse divider Z2 (number of impulse /1 display step)
07	0.0000	step width Z1 (display step/1 impulse)
08	0.0000	step width Z2 (display step/1 impulse)

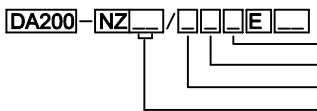
screw type terminals



technical data

aux. supply:	DA200-NZxx/A1...	18-35 V DC
	DA200-NZxx/A2...	100-240 V AC/DC
temperature range:	-25 °C ... +65 °C	
preset :	programmable	
impulse input:	24V active high add. / subtract L < 7V, H > 15V max. 35V	
operating input:	24V active high L < 7V, H > 15V max. 35V	
reset:	24V active high reset-preset programmable	
stop:	24V active high	
start:	24V active low (< 7V: totalizer starts with impulse)	

totalizer option (input 13+14):	L = add. H = subtract
sum formation (input 15):	H = sum of the count status Z1+Z2 will be displayed
display switch (input 16):	L = display counter value Z1 H = display counter value Z2
by falling of the aux. supply will the totalizer range be saved	
input resistance:	15 kOhm
totalizer frequenz :	max. 1kHz
impulse length :	min. 0,1 ms
step width :	programmable
display :	200 mm, LED red or green



dimension:
display colour:
aux. supply:
input :
display :

D = max. 2 figures	D1 = max. 4 figures
R = red	G = green
1 = 24V DC	2 = 230V AC
A = totalizer active high 24V	
30 = 3 digits	40 = 4 digits
	50 = 5 digits

GS Gebhardt & Schäfer Industrie-Elektronik GmbH

Moltkestraße 44a, D-42799 Leichlingen
Postfach 15 52, D-42786 Leichlingen
Tel. +49 (0) 21 75 / 89 91 30
Fax +49 (0) 21 75 / 89 91 39
Internet: <http://www.GS-GmbH.de>
E-Mail: info@GS-GmbH.de

Deutsche Bank 24
Konto-Nr. 851 085 100
BLZ 375 700 24
Kreissparkasse Köln
Konto-Nr. 031 200 61 45
BLZ 370 502 99

Foreign Payments:
Deutsche Bank 24
Account-No. 851 085 1
Bank Code 375 700 24
IBAN DE 81375700240008510851
S.W.I.F.T. DEUTDEDK 375

Geschäftsführer:
Karlheinz Schäfer
Guido Gebhardt
USt.-Nr. DE 123713297
Amtsgericht Köln
HRB 48860